

ARMOURCOAT™
SURFACE FINISHES

POLISHED PLASTER
Travertine
Pitted
Dragged

Travertine

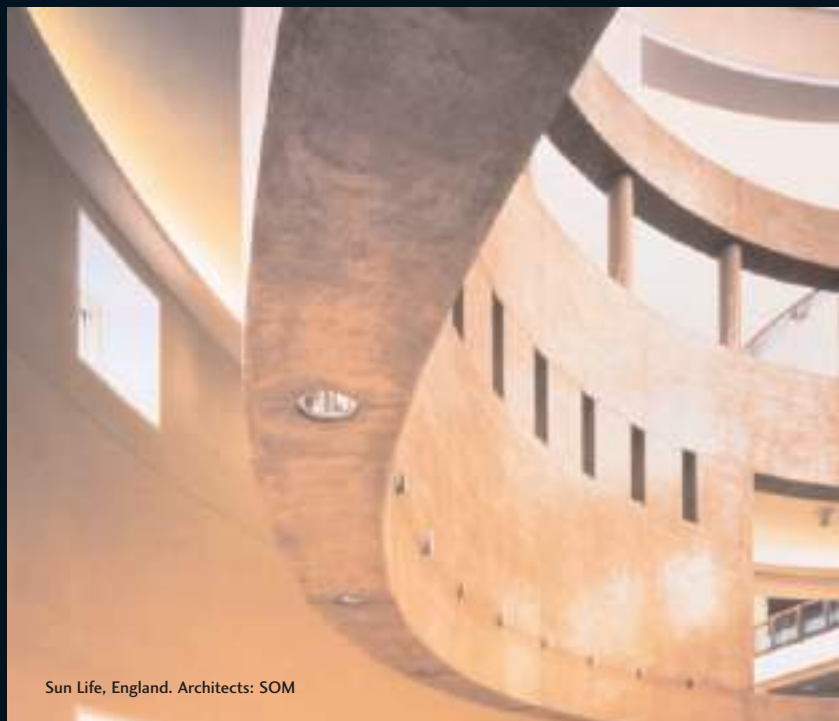
The Travertine finish has a light open texture and a directional quality similar to that of natural travertine stone. The surface has a low sheen, and although applied in just one colour appears to have two or three distinctly separate tones running through the surface. This finish can work well in colours across the spectrum as it is possible to achieve the subtle tonal contrasts in both light and dark colours.



Daniel Galvin, England. Design: Caulder Moore

Pitted

The rugged, more grainy appearance of the Pitted finish combines with a less highly polished surface to create the appearance and feel of honed or lightly polished limestone. It is most effective when used to create the appearance of a monolithic stone surface or a natural stone block. The Pitted finish is seen to best effect in lighter or natural stone colours and can benefit greatly from acute downlighting to accentuate the slightly pitted nature of the surface.



Sun Life, England. Architects: SOM

Dragged

Inspired by the patterning of weathered rock, the Dragged finish is another Armourcoat development – both in technique and specialist tools. Using the same basic ingredients as the Pitted finish, the rugged, grainy, yet semi-polished surface is characterised by striations of texture running through the surface to give a strong directional quality.



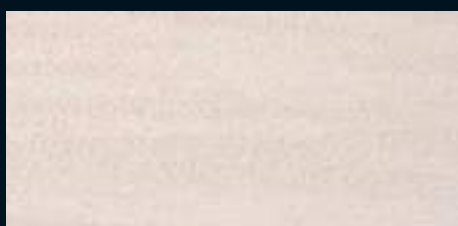
Dragged



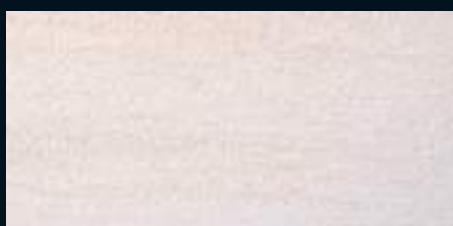
Travertine Colour Palette



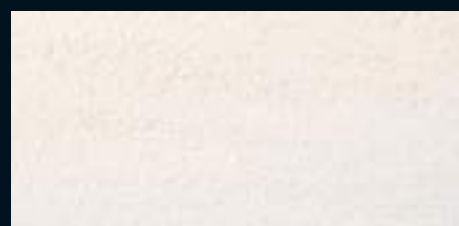
TR L0022



TR L0139



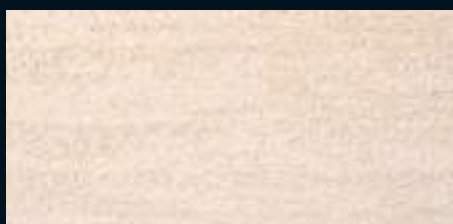
TR L0170



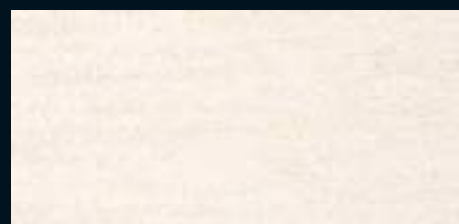
TR L0006



TR L4206



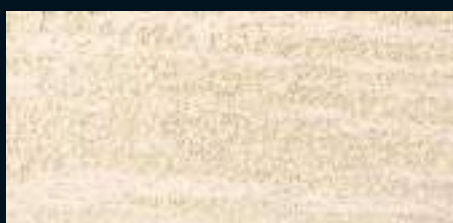
TR L4214



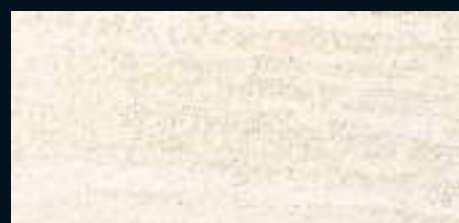
TR L0188



TR L0246



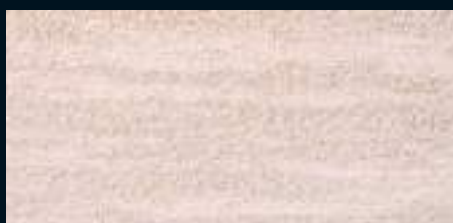
TR L0287



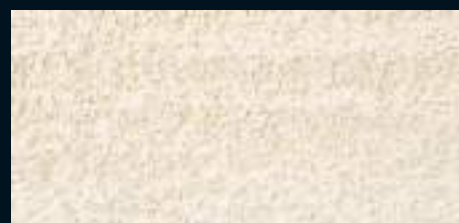
TR L6185



TR L0436



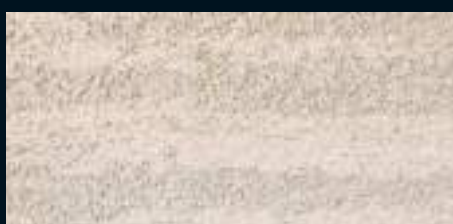
TR L4222



TR L0444



TR L0162



TR L0451



TR L8157

Colours and patterns illustrated are for guidance only. Due to print limitations, the exact pattern, colours and shades may vary from those shown. Please request a sample for accurate colour representation.

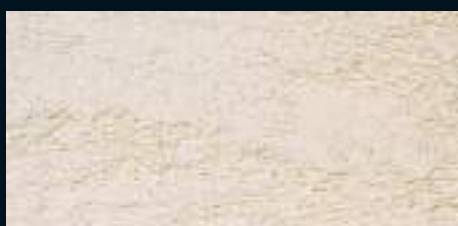
Dragged Colour Palette



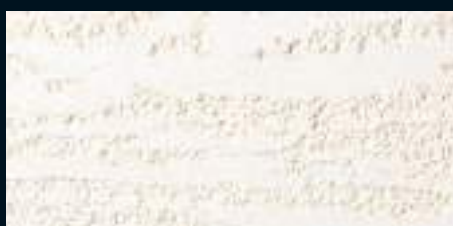
DR L0022



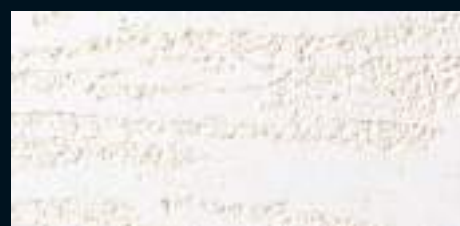
Chemical Bank, England. Architect: SOM



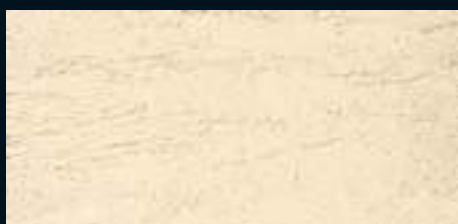
DR L0139



DR L0170



DR L0006



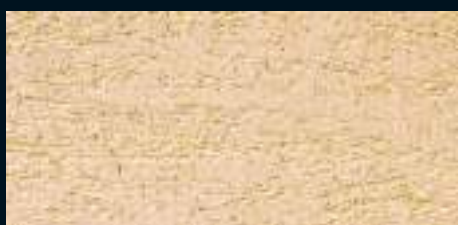
DR L4206



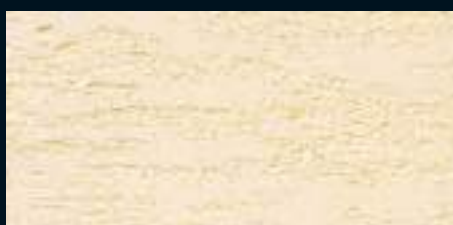
DR L4214



DR L0188



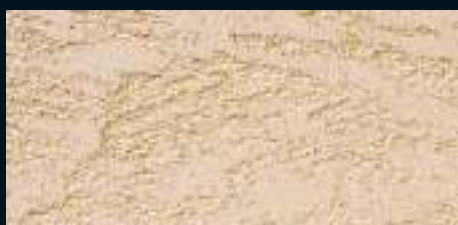
DR L0246



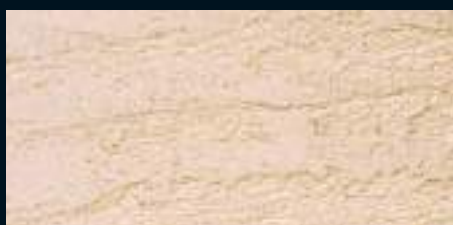
DR L0287



DR L6185



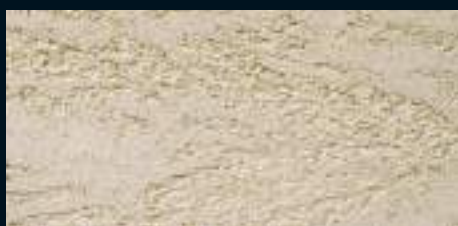
DR L0436



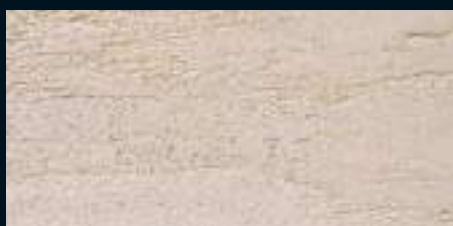
DR L4222



DR L0444



DR L0162



DR L0451



DR L8157

Colours and patterns illustrated are for guidance only. Due to print limitations, the exact pattern, colours and shades may vary from those shown. Please request a sample for accurate colour representation.

Pitted Colour Palette



PT L0253



PT L0246



PT L0238



PT L0121



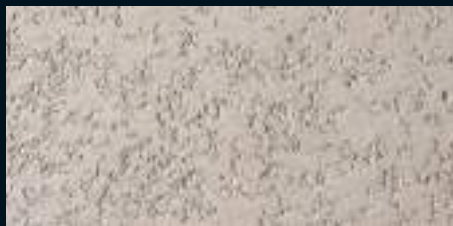
PT L0113



PT L0105



PT L0220



PT L0147



PT L0139



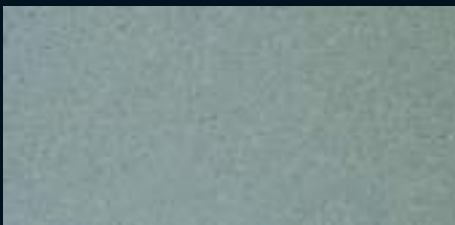
PT L0212



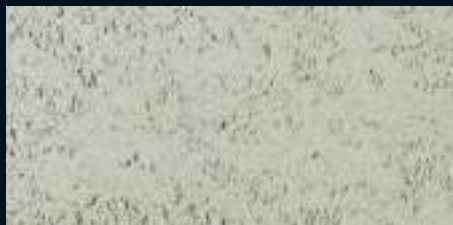
PT L0162



PT L0154



PT L8165



PT L8033



PT L8090



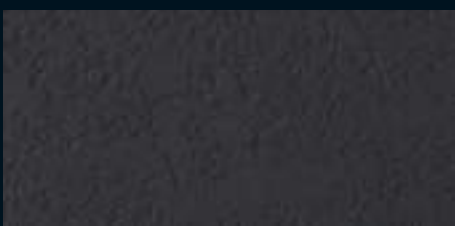
PT L2077



PT L2200



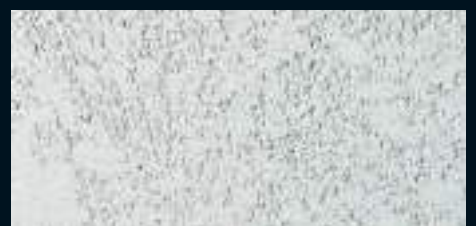
PT L2226



PT L0204



PT L0196



PT L0022

Colours and patterns illustrated are for guidance only. Due to print limitations, the exact pattern, colours and shades may vary from those shown. Please request a sample for accurate colour representation.

Pitted Colour Palette



PT L0279



PT L0261



PT L0006



PT L0170



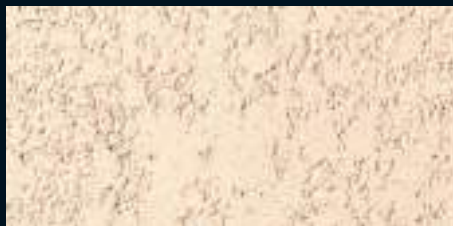
PT L6185



PT L0188



PT L4107



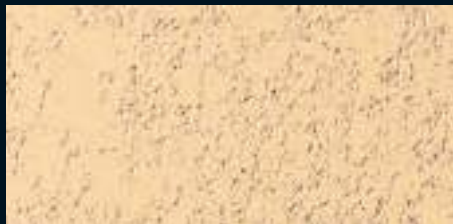
PT L4065



PT L4131



PT L4123



PT L4024



PT L4115



PT L6102



PT L6052



PT L6110



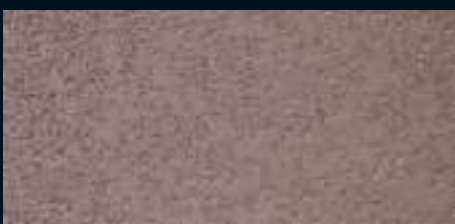
PT L6078



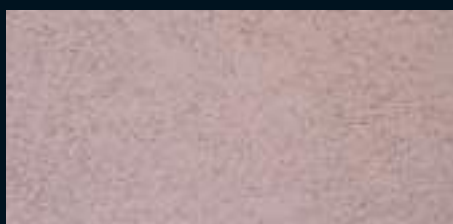
PT L6086



PT L 6144



PT L0469



PT L6284



PT L0477

Colours and patterns illustrated are for guidance only. Due to print limitations, the exact pattern, colours and shades may vary from those shown. Please request a sample for accurate colour representation.

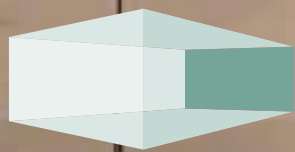


ARMOURCOAT™
SURFACE FINISHES

For product specific brochures, further information, and the location of your nearest Armourcoat Surfaces Finishes agent, please see our website.

Armourcoat Limited, Morewood Close, Sevenoaks, Kent TN13 2HU, United Kingdom
Telephone: +44 (0)1732 460668 Fax: +44 (0)1732 450930 Email: sales@armourcoat.co.uk

www.armourcoat.com



ARMOURCOAT®
SURFACE FINISHES

POLISHED PLASTER

KonCrete®

Armourcoat KonCrete® is an urban range of polished plaster colours and finishes designed for contemporary projects.

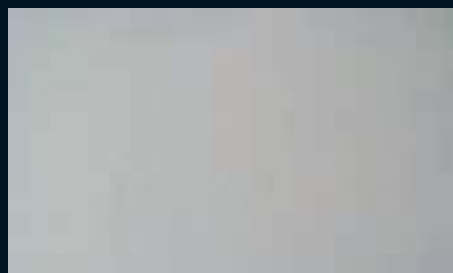
The range offers a wealth of design options to achieve a distinctive modern look, including distressed effects or recessed 'shutter' markings.

We can match to existing concrete or decorative elements to give you the perfect effect.

- A natural mineral product created from ultra-fine lime putty, marble powder and special additives.
- Contains 40% pre-consumer recycled marble
- Low VOCs
- Class '0' / 'A' fire-rating



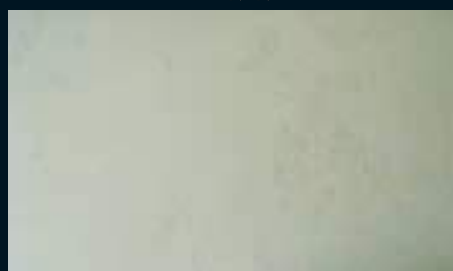
Honed



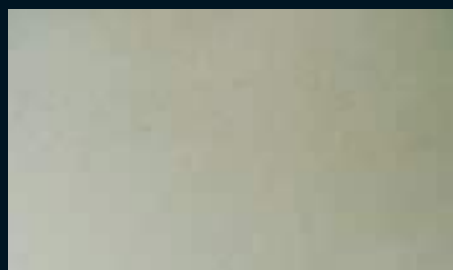
KN 6734



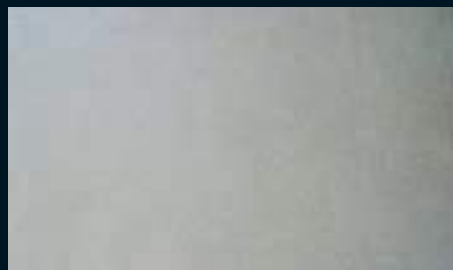
KN 6767



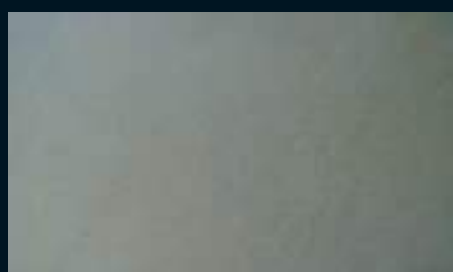
KN 6766



KN 6775



KN 6733

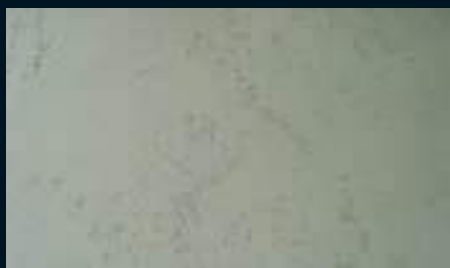


KN 6735

Honed with Colourwash



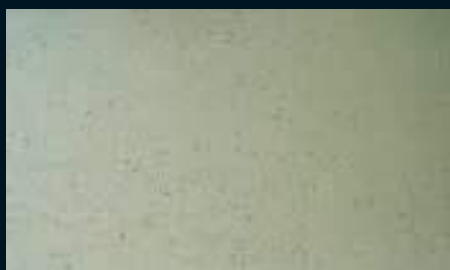
KN 7239



KN 7238



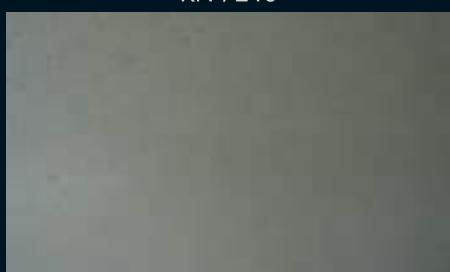
KN 7237



KN 7241

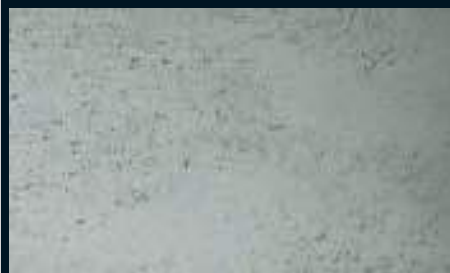


KN 7240



KN 7236

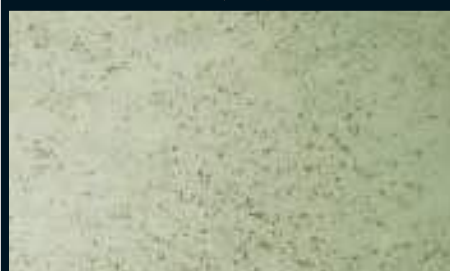
Textured with Colourwash



KN 7244



KN 7245



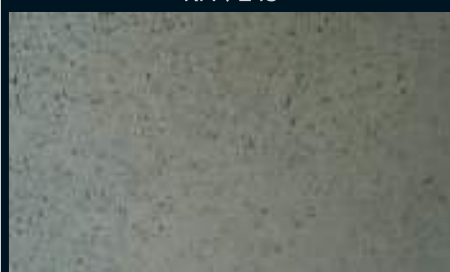
KN 7246



KN 7242



KN 7243



KN 7247

Image: Ink Restaurant, Kiev - Armourcoat KonCrete® finish with additional recessed 'shutter' markings Installation: Faktura Design: Sergey Makhno

Armourcoat Surface Finishes Morewood Close London Road Sevenoaks Kent TN13 2HU
T: +44 (0)1732 460668 F: +44 (0)1732 450930 E: specs@armourcoat.co.uk

www.armourcoat.com

KN0513



Rufuto Restaurant at the Park Regis Hotel, Birmingham

Granite

The Granite polished plaster finish recreates the timeless beauty and long-lasting qualities of granite, a classic choice offering a natural stone option.

This rugged finish, created from a natural material composed of hydrated lime and crushed marble, presents a rough-hewn surface full of texture and interest.



Granite Effect Range



GR 9808



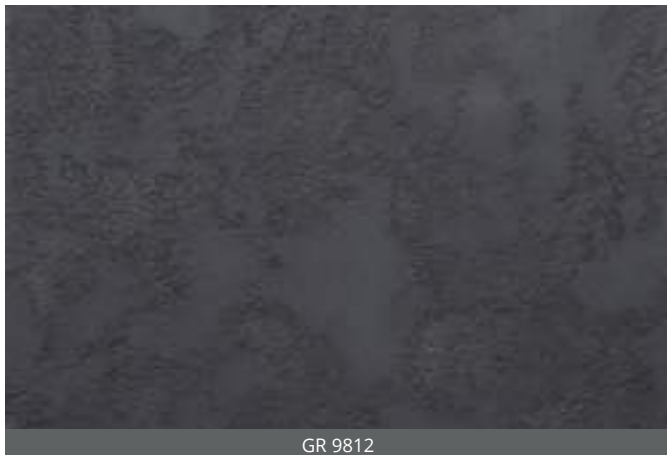
GR 9810



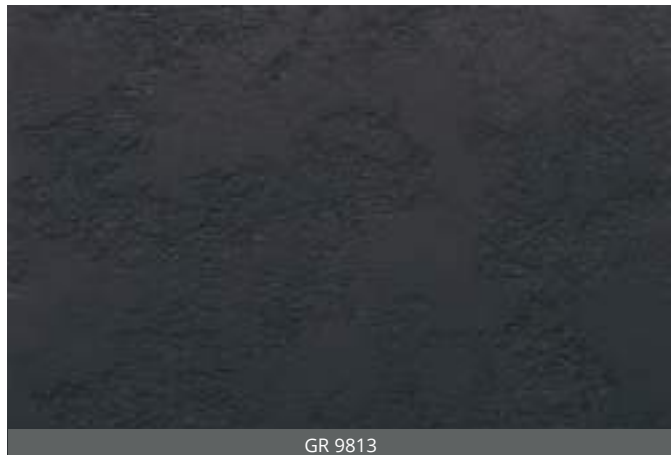
GR 9809



GR 9811



GR 9812



GR 9813

Colours and patterns illustrated are for guidance only. Due to print limitations, the exact patterns, colours and shades may vary from those shown. Please request a sample for accurate representation. These can be requested via the Armourcoat website by entering the product code.



For further information and the location of your nearest Armourcoat Surface Finishes agent, please visit our website.

Armourcoat Limited | Morewood Close | Sevenoaks | Kent | TN13 2HU | United Kingdom
Telephone: +44 (0)1732 460668 | Fax: +44 (0)1732 450930 | Email: specsales@armourcoat.co.uk

Armourcoat Surface Finishes Inc | 4330 Production Court | Las Vegas | NV 89115 | USA
Telephone: (702) 644-0601 | Fax: (702) 644-0554 | Email: sales@usa.armourcoat.com

www.armourcoat.com

©2016 Armourcoat Limited. Granite is a product and trademark of Armourcoat Ltd.

GRB1016



Tactite

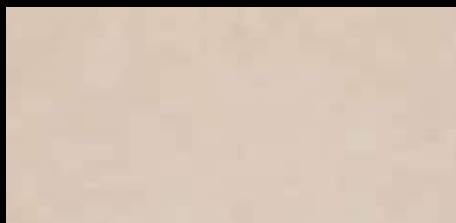
Tactite

A high performance solution for demanding interiors, Tactite creates a tough, durable and hygienic wall coating. The finish is exceptionally hardwearing and easy to clean, making it highly suitable for commercial interiors such as hospitals, schools, offices and high traffic public areas where cleanliness is essential. Also ideal for domestic use, Tactite features a 'soft touch' feel to create a warm, inviting interior with a suede or textured finish.

- A cost effective alternative to decorative paint effects, wall paper and vinyl wall coverings
- Provides a seamless, durable, cleanable, hardwearing and low maintenance wall finish
- Available in a range of 36 colours with a 'soft touch' suede-look effect
- Washable and scrubbable matt finish, tough and durable
- Hugely popular modern designer finish
- Formulated to prevent mould, mildew and bacterial growth (including MRSA and E.Coli)
- Excellent stain and scrub resistance (washable surface)
- Low VOCs and low odour
- Coverage rate: 8 - 10 m²/litre (two coat application)



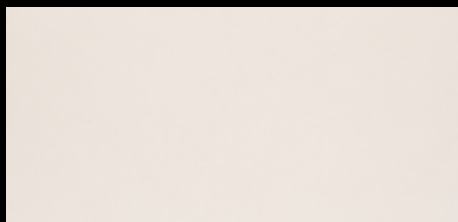
TT - N6639 / TTBP



TT - N6647 / TTBP - N6464



TT - N6654 / TTBP - N6472



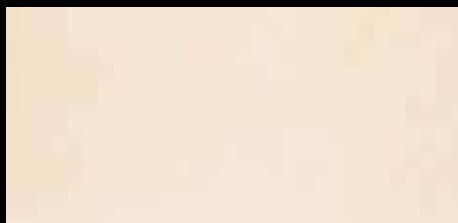
TT / TTBP



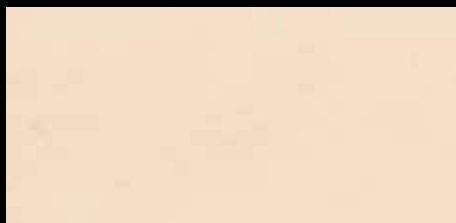
TT - N6662 / TTBP - N6480



TT - N6654 / TTBP - N6498



TT - N6670 / TTBP



TT - N6688 / TTBP



TT - N6688 / TTBP - N6506



TT - N6696 / TTBP - N6514



TT - N6704 / TTBD - N6522



TT - N6712 / TTBD - N6530



TT - N6720 / TTBD - N6522



TT - N6738 / TTBP - N6555



TT - N6746 / TTBD - N6563



TT - N6753 / TTBD - N6571



TT - N6761 / TTBD - N6589



TT - N6779 / TTBD - N6597



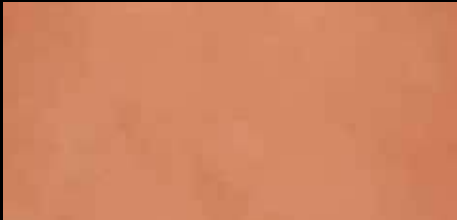
TT - R5389 / TTBD - R5322



TT - R5397 / TTBD - R5330



TT - Y3146 / TTBP - Y3112



TT - R5405 / TTBD - R5348



TT - R5413 / TTBD - R5355



TT - Y3153 / TTBP - Y3120



TT - R5421 / TTBD - R5363



TT - R5439 / TTBD - R5371



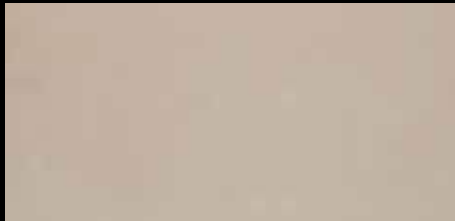
TT - Y3161 / TTBD - Y3158



TT - G2793 / TTBP - G2769



TT - B5676 / TTBP - R5643



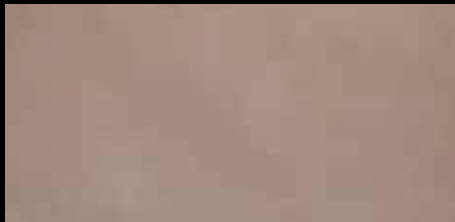
TT - N6787 / TTBP - N6605



TT - G2801 / TTBP - G2777



TT - B5684 / TTBP - B5650



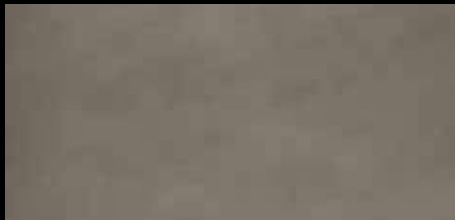
TT - N6795 / TTBP - N6613



TT - G2819 / TTBD - G2785



TT - B5692 / TTBD - B5668



TT - N7041 / TTBP - N6621

Tactite product data

Product description	A water-based decorative wall coating creating a tough, durable and hygienic finish. Features a 'soft touch' feel with a suede finish.
Colour palette	36 colours
Test Data SCRUB RESISTANCE (ASTM D2486) ISO 2812 STAIN RESISTANCE (ASTM D1308) ANTI-MICROBIAL PRESERVATION Mould resistance (ASTM D3273) Mildew resistance (ASTM 3274) ANTI-FUNGAL ACTIVITY Anti-algal activity Anti-bacterial (JIS Z2801) FIRE TEST ASTM E84	1,150 cycles Class 2 - washable Coffee 4, red wine 4, vinegar 5, tomato sauce 5, mustard 3, strawberry preserve 5 (1 = poor 5 = excellent) 10/10/10 10/10/10 (1 = poor 10 = no growth) No visible growth No visible growth E.Coli, MRSA, Salmonella, no bacteria survived Class A
VOC content ASTM D3960 (USA EPA <250g/litre) BS ISO EN 11890-2	67 g/l EU limit for this product (cat A/I): 200 g/l (2010). This product contains max 10g/l VOC
Coverage rates	8-10m ² /litre (two coat application)
Manufacturer	Manufactured in the UK by Armourcoat Ltd
Health and Safety	Non-toxic. Refer to material safety data sheet for further information
Suitable substrates	Can be applied to our recommended substrates which should be clean, dry, firm, true, will not crack and are correctly prepared. The best substrates to work on are taped and jointed plasterboard and freshly plastered walls that are fully dry. Tactite can be applied to existing painted surfaces, provided that the paint is well adhered to the wall.
Storage	Store in good dry condition between 5-25°C. Protect from frost, sunlight and sources of direct heat. Keep container sealed when not in use. Shelf life in an unopened container under correct storage conditions is 12 months from date of manufacture.



Armourcoat Limited, Morewood Close, Sevenoaks, Kent, TN13 2HU, United Kingdom
T: +44 (0)1732 460668, F: +44 (0)1732 450930 E: sales@armourcoat.co.uk

www.armourcoat.com



Perlata



Perlata

Exquisite and luxurious, Perlata is an elegant finish with a subtle sparkle or shimmer, creating visual texture and directional effect. With a low sheen, the intriguing surface is full of movement and tonal interest. The finish is dependent on the hand of the applicator, creating a unique and visually striking wall coating at close quarters, yet subtle when viewed from a distance.

- A cost effective alternative to wall paper and vinyl wall coverings
- Provides a seamless, durable, cleanable, hardwearing and low maintenance wall finish
- Available in a wide range of 96 colours using a silver, gold or new bronze base
- Easy to repair or to match existing colour
- Applicator able to achieve many highly decorative effects
- Formulated to prevent mould, mildew and bacterial growth (including MRSA and E.Coli)
- Class 'O' fire rated
- Excellent stain and scrub resistance (enhanced with Clearseal Gloss and Clearseal Glitter)
- Low VOCs and low odour
- Coverage rate: 5-7m² (two coat application)

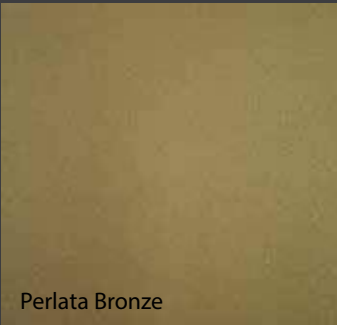


ARMOURCOLOR PERLATA PRODUCT DATA SHEET

PRODUCT DESCRIPTION	A water-based decorative wall coating, formulated with effect pigments. Creates an elegant finish with a subtle surface shimmer.
COLOUR PALETTE	96 colours
TEST DATA	
Scrub Resistance (ASTM D2486) (*with Clearseal Gloss /Glitter)	1,075 cycles (1,925)
Stain Resistance (ASTM D1308) (*with Clearseal Gloss / Glitter)	Coffee 4, red wine 1(2) vinegar 5, tomato sauce 5, mustard 2 (4), strawberry preserve 5 (1= poor 5 = excellent)
Anti-Microbial Preservation	
Mould resistance (ASTM D3273)	10/10/10
Mildew resistance (ASTM D3274)	10/10/10 (1= poor 10 = no growth)
Anti-Fungal Activity	No visible growth
Anti-Algal Activity	No visible growth
Anti-Bacterial (JIS Z2801)	E.Coli, MRSA, Salmonella No bacteria survived
Fire Test ASTM E84 BS476 6&7	Class A Class 0
VOC CONTENT ASTM D3960 (USA EPA <250g/l) BS ISO EN 11890-2	209g/l EU limit for this product (cat A/l): 300g/l (2007) / 200 g/l (2010). This product contains max 100g/l VOC
COVERAGE RATES	5-7m²/litre
MANUFACTURER	Manufactured in the UK by Armourcoat Ltd
HEALTH AND SAFETY	Non-toxic. Refer to Material Safety Data Sheet for further information.
SUITABLE SUBSTRATES	Can be applied to our recommended substrates which should be clean, dry, firm, true, will not crack and are correctly prepared. The best substrates to work on are taped and jointed plasterboard and freshly plastered walls that are fully dry. ArmourColor products can be applied to existing painted surfaces provided that the paint is well adhered to the wall.
STORAGE	Store in good dry conditions between 5 - 25°C. Protect from frost, sunlight and sources of direct heat. Keep container sealed when not in use. Shelf life in an unopened container under correct storage conditions is 12 months from date of manufacture.

New Perlata Finishes

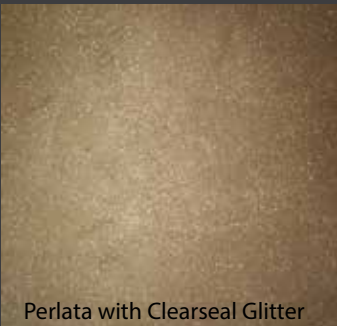
Perlata is available in a wide range of 96 elegant colours - now with 15 stunning new bronze colours. Perlata can be further enhanced with the use of different application techniques, such as 'Strié' seen below, or by the additional application of Clearseal Glitter.



Perlata Bronze



Perlata 'Strié'

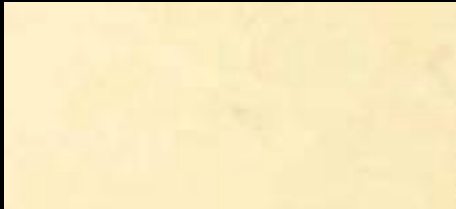


Perlata with Clearseal Glitter

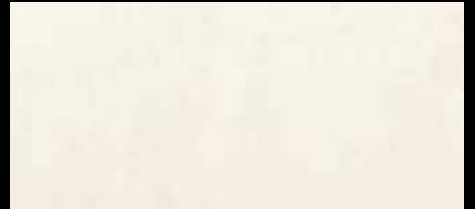




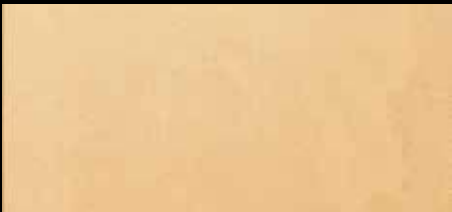
PLS Y2528



PLS Y2536



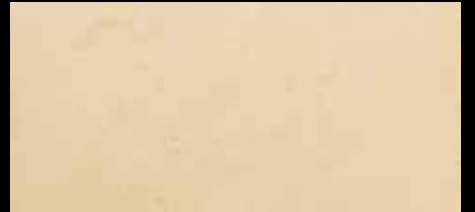
PLS



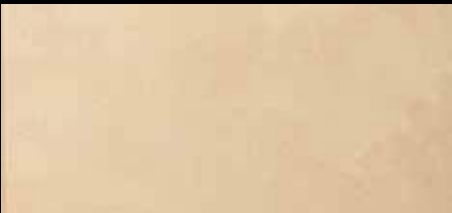
PLS Y2544



PLS Y2551



PLS Y2569



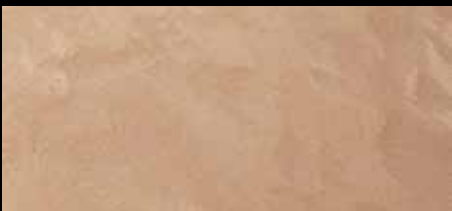
PLS Y2403



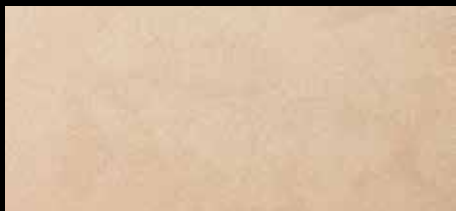
PLS Y0316



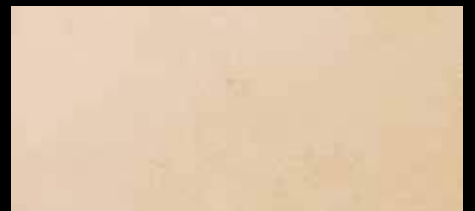
PLS Y2577



PLS Y0555



PLS Y0522



PLS Y0548



PLS Y0613



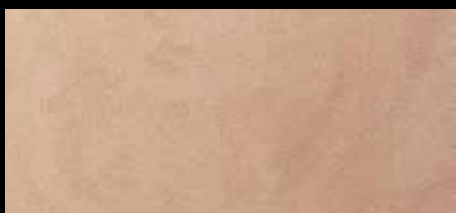
PLS Y2411



PLS Y2429



PLS N5151



PLS N5169



PLS N5177



PLS R4366



PLS R4374



PLS R4382



PLS R3814



PLS R0398



PLS R4358



PLS N0608



PLS N5573



PLS N5474



PLS N5482



PLS N5490



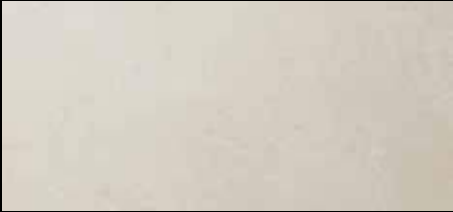
PLS N5375



PLS N5508



PLS N0756



PLS N0244



PLS N5516



PLS N5110



PLS N5128



PLS G2157



PLS G2165



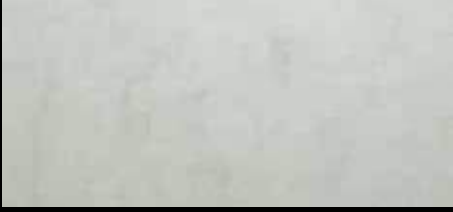
PLS G2173



PLS G2181



PLS G0102



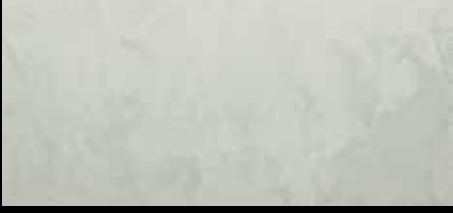
PLS G0136



PLS B4810



PLS B4828



PLS B4836



PLS B4844



PLS B4851



PLS B4802



PLS B0875



PLS B4869



PLS B4877



PLS B4885



PLS B0800



PLS B4893



PLS B4901



PLS B4919



PLS B4927



PLS B9968



PLS B9972



PLS B9983



PLG B0800



PLG B4893



PLG B4943



PLG B4950



PLG B4968



PLG B4976



PLG B4935



PLG B4844



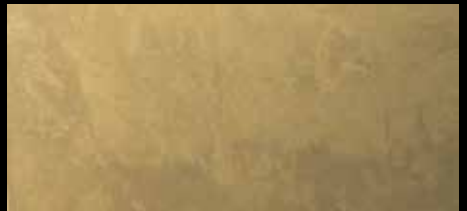
PLG B4851



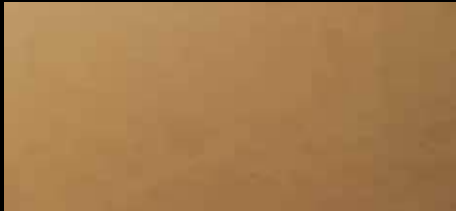
PLG N5524



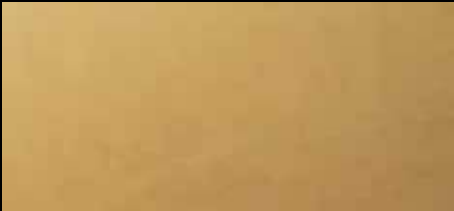
PLG N5532



PLG N5540



PLG R4408



PLG R4416



PLG R4689



PLG Y0613



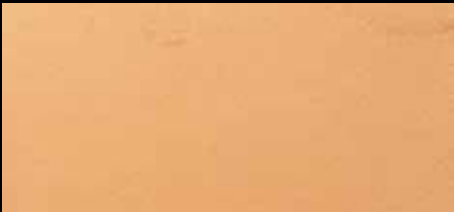
PLG Y2411



PLG



PLG R4655



PLG R4663



PLG R4671



PLB NZ7452



PLB NZ7449



PLB



PLB NZ7478



PLB B9935



PLB NZ7467



PLB R9015



PLB B4844



PLB Y5944



PLB G5179



PLB Y5960



PLB Y5951



PLB B9958



PLB G5189



PLB B9942

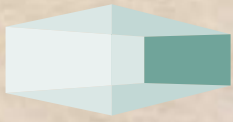


ARMOURCOAT®
SURFACE FINISHES

**ArmourColor is a new range of decorative wall coatings from Armourcoat.
For further information please visit our website.**

Armourcoat Limited, Morewood Close, Sevenoaks, Kent TN13 2HU, United Kingdom
Telephone: +44 (0)1732 460668 Fax: +44 (0)1732 450930 Email: specsales@armourcoat.co.uk

www.armourcoat.com



ARMOURCOAT™
SURFACE FINISHES

POLISHED PLASTER

Smooth

The Smooth polished finish is similar to the *marmorino* stucco, used extensively in northern Italy during the Renaissance period as an internal and external wall finish and as a background for the ornate frescoes which dominated much of the decoration of that time. It is this combination of material and technique that is now widely regarded as *Venetian plaster*.

The final appearance of this finish is very dependent on the *hand* of the individual applicator, making it possible to achieve anything from a plain, lightly polished surface to a more highly burred and marbled effect.



Bullring Shopping Centre, England. Architects: Benoy

Asprey, London, England. Designers: Lord Foster / David Mlinaric





Cleo's Wine Bar, London, England. Design: RSD Design

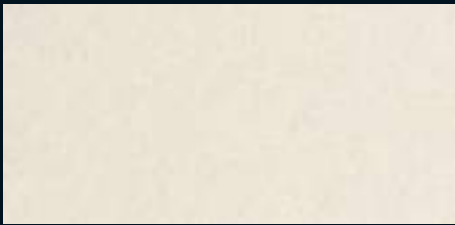


SM X0115

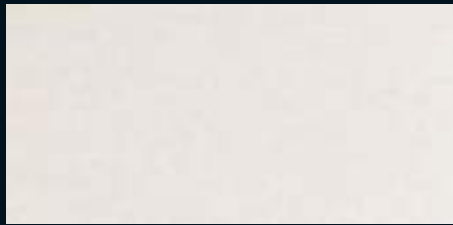


Bluewater, Kent, England. Architects: Benoy

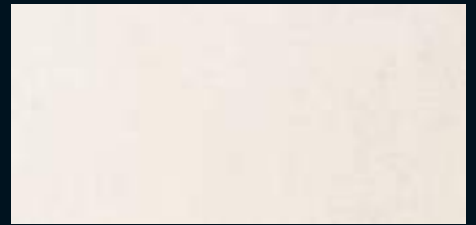
Smooth Colour Palette



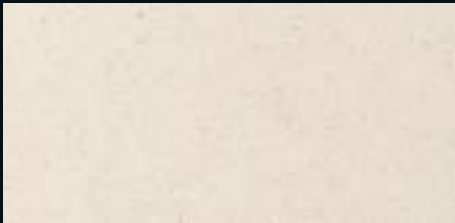
SM X0226



SM X0218



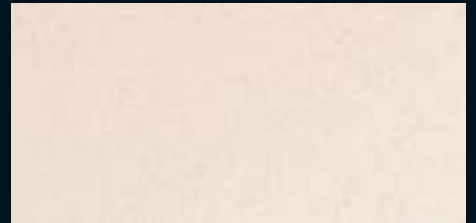
SM X0081



SM X0107



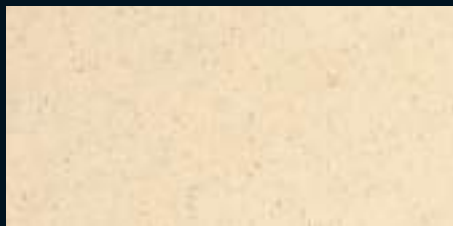
SM X6157



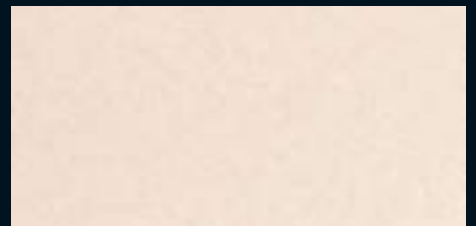
SM X0115



SM X4046



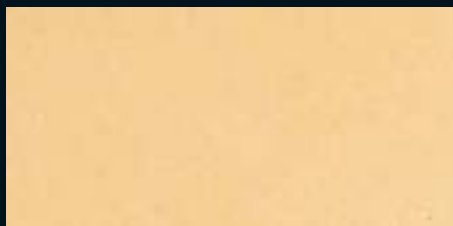
SM X4004



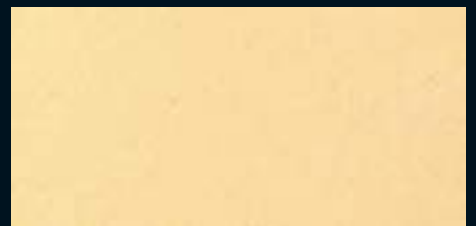
SM X4095



SM X4087



SM X4079



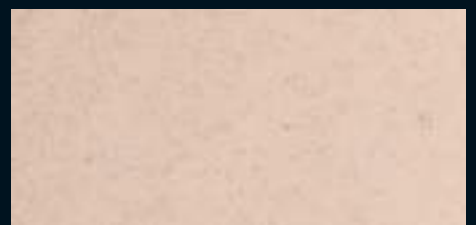
SM X4061



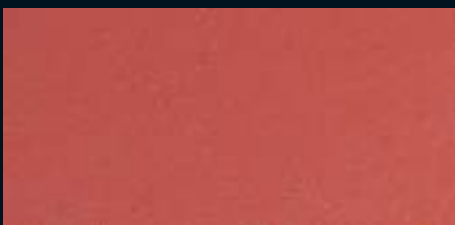
SM X6082



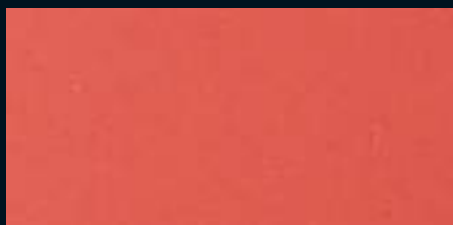
SM X6074



SM X6009



SM X6116



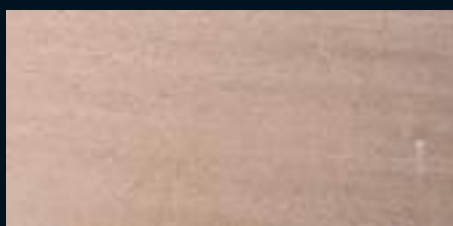
SM X6108



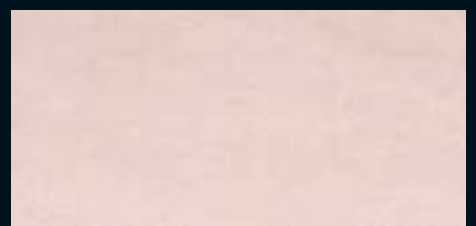
SM X6033



SM X0234



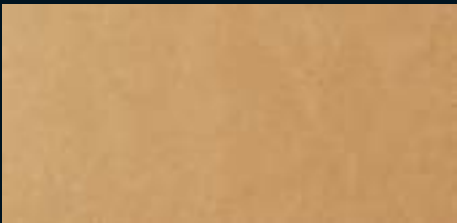
SM X6215



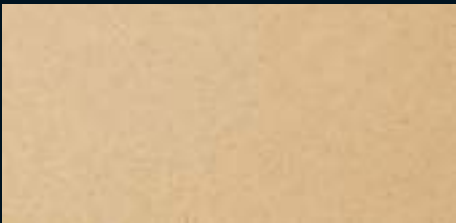
SM X0242

Colours and patterns illustrated are for guidance only. Due to print limitations, the exact pattern, colours and shades may vary from those shown. Please request a sample for accurate colour representation.

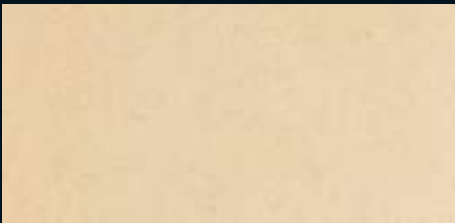
Smooth Colour Palette



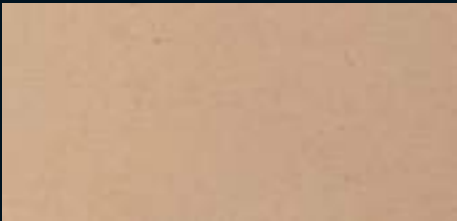
SM X0206



SM X0198



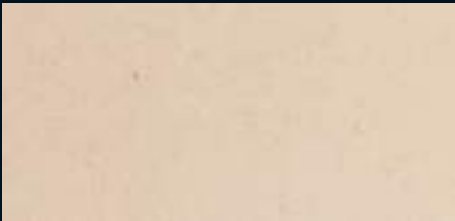
SM X0180



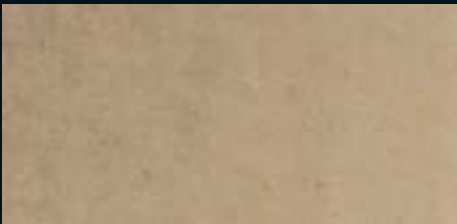
SM X0024



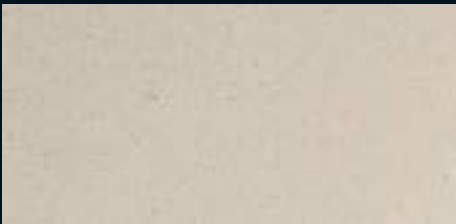
SM X0016



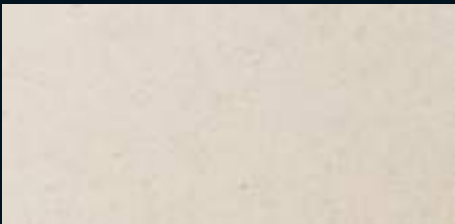
SM X0008



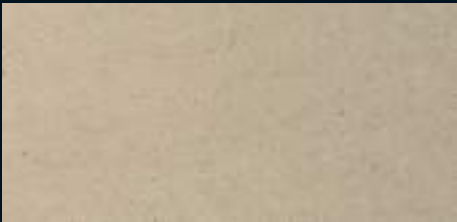
SM X0172



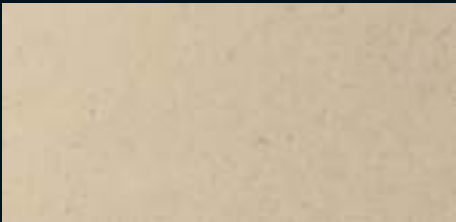
SM X0040



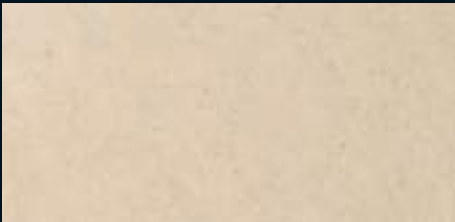
SM X0032



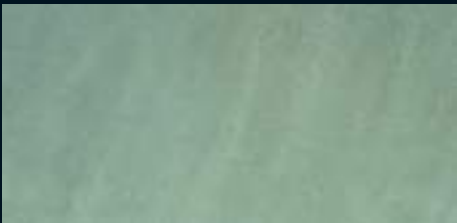
SM X0156



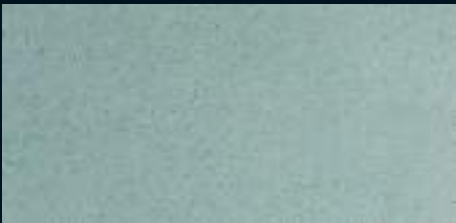
SM X0073



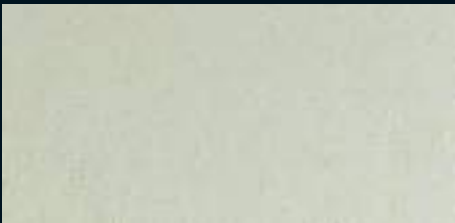
SM X0065



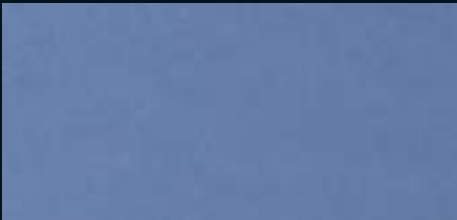
SM X8112



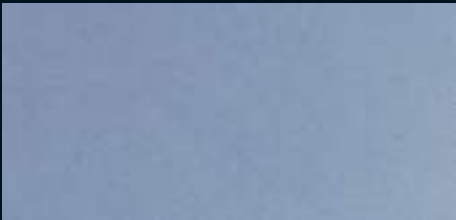
SM X8054



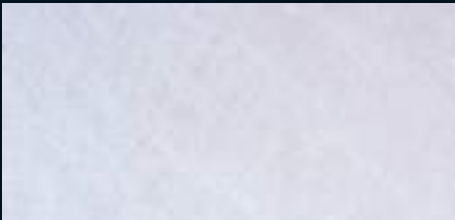
SM X8047



SM X2040



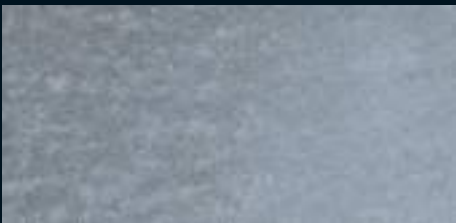
SM X2172



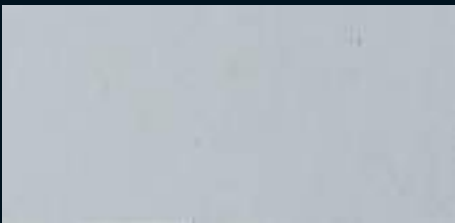
SM X2198



SM X0149



SM X0131



SM X0123

Colours and patterns illustrated are for guidance only. Due to print limitations, the exact pattern, colours and shades may vary from those shown. Please request a sample for accurate colour representation.

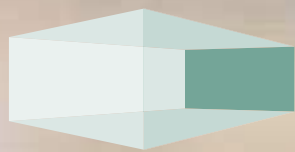


ARMOURCOAT™
SURFACE FINISHES

For product specific brochures, further information, and the location of your nearest Armourcoat Surfaces Finishes agent, please see our website.

Armourcoat Limited, Morewood Close, Sevenoaks, Kent TN13 2HU, United Kingdom
Telephone: +44 (0)1732 460668 Fax: +44 (0)1732 450930 Email: sales@armourcoat.co.uk

www.armourcoat.com



ARMOURCOAT®
SURFACE FINISHES

Striated

The Striated finish was designed with high fashion in mind. Emulating raw silk, this natural looking seamless effect is discreet yet luxurious.

The finish works well in a range of earthy tones, but excels in white and off-white shades.

- A natural mineral product created from ultra-fine lime putty, marble powder and special additives.
- Contains 40% pre-consumer recycled marble
- Low VOCs
- Class '0' / 'A' fire-rating



POLISHED PLASTER



ST 5250



ST 5249



ST 5253



ST 5252



ST 5251



ST 5259



ST 5256



ST 5257



ST 5258



ST 5254



ST 5255



ST 5248

Please note the Striated finish is unsuitable for curved surfaces or single areas greater than 15m²

Armourcoat Surface Finishes Morewood Close London Road Sevenoaks Kent TN13 2HU
T: +44 (0)1732 460668 F: +44 (0)1732 450930 E: specsales@armourcoat.co.uk

www.armourcoat.com

ST0513



ARMOURCOAT™
SURFACE FINISHES

POLISHED PLASTER

Spatulata

The Spatulata finish is pure luxury. Pioneered by the Egyptians; improved by the Romans; it became known as *stucco lustro veneziano* by the Venetians. Traditionally it was applied in 10-15 fine coats over a background of 2-3 layers of semi-dry marmorino and finally polished with hot irons. Modern additives have greatly improved the working characteristics enabling it to be successfully applied in just 5-7 layers and polished to a glassy shine with a small steel blade or trowel. Spatulata finish is a unique mix of high-grade aged lime putty, micronised marble powder and special additives. For many, it is the ultimate Venetian stucco; certainly the one with the highest sheen and the most intriguing texture. Applied in numerous fine layers and then trowel polished to a glassy surface, it possesses remarkable depth and sheen.



Intercontinental Hotel, USA. Architects: Gensler

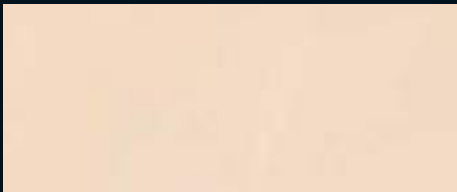


Pearsons TV, England. Architects: Househam Henderson.

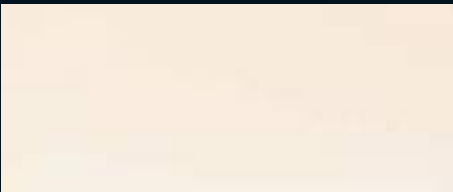


RTKL, USA. Architects: RTKL

Spatulata Colour Palette



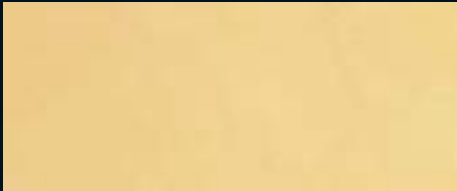
SP P80 Y2395



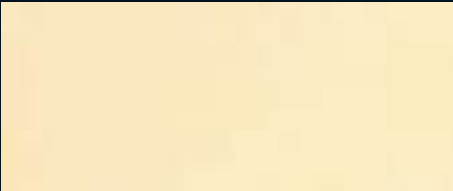
SP P80 Y0860



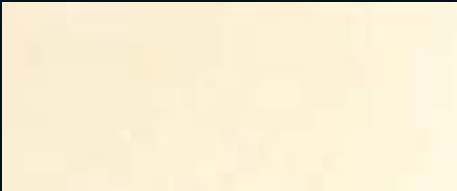
SP P80



SP P80 Y2403



SP P80 Y0316



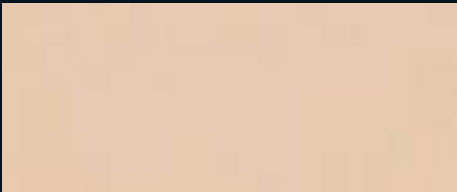
SP P80 N0509



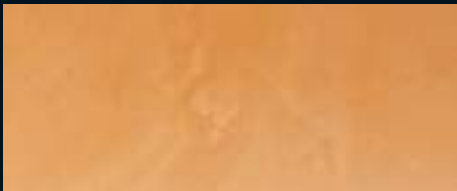
SP P80 Y0555



SP P80 Y0522



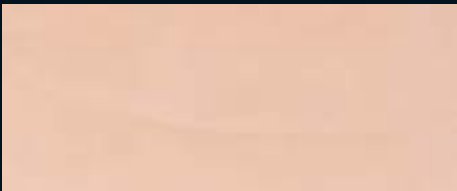
SP P80 Y0548



SP P80 Y0613



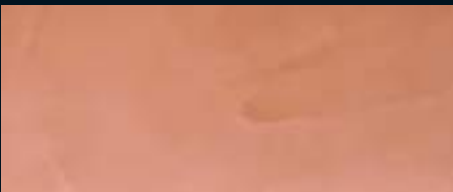
SP P80 Y2411



SP P80 Y2429



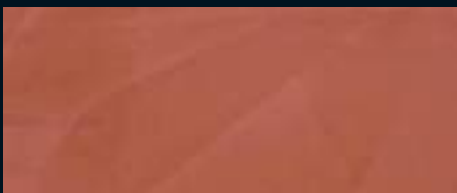
SP P80 N5151



SP P80 N5169



SP P80 N5177



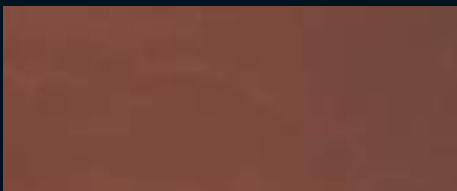
SP P80 R3814



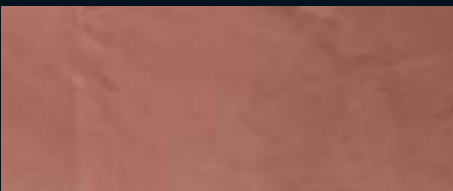
SP P80 RO398



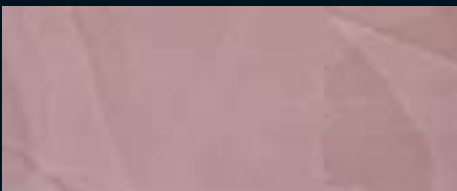
SP P80 R4358



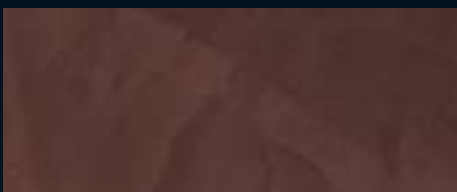
SP P80 R4366



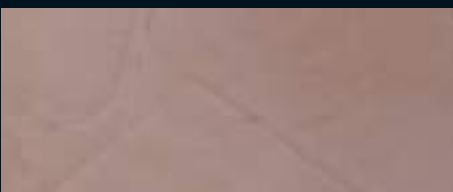
SP P80 R4374



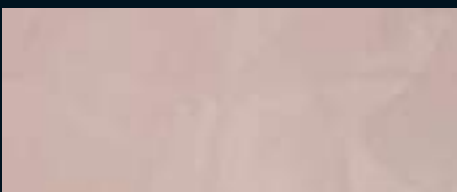
SP P80 R4382



SP P80 R4390



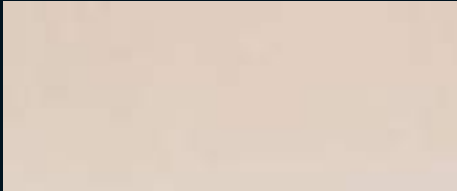
SP P80 R4408



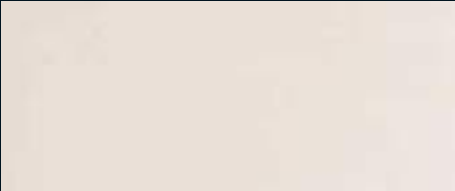
SP P80 R4416

Colours and patterns illustrated are for guidance only. Due to print limitations, the exact pattern, colours and shades may vary from those shown. Please request a sample for accurate colour representation.

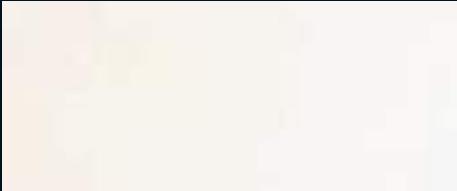
Spatulata Colour Palette



SP P80 N0756



SP P80 N0244



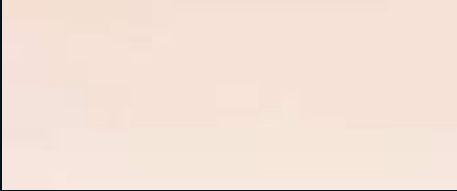
SP P80 N0491



SP P80 N0145



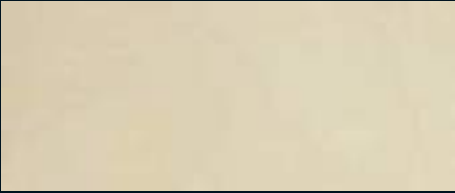
SP P80 N5110



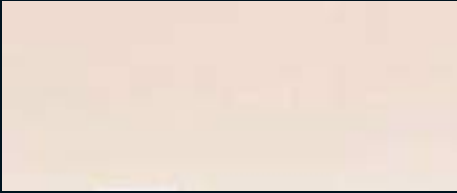
SP P80 N5128



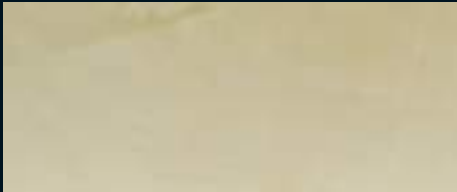
SP P80 G2132



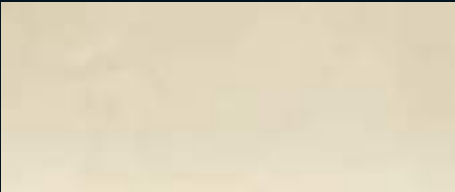
SP P80 G0045



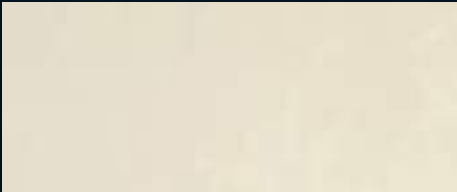
SP P80 G2140



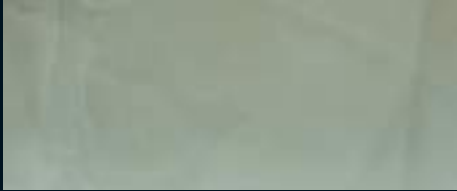
SP P80 G2157



SP P80 G2165



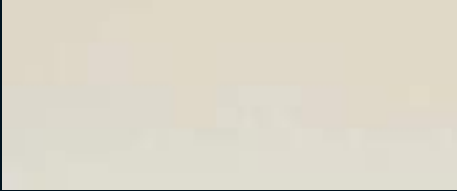
SP P80 G2173



SP P80 G2181



SP P80 G0102



SP P80 G0136



SP P80 B4471



SP P80 B4489



SP P80 B4497



SP P80 B4505



SP P80 B4513



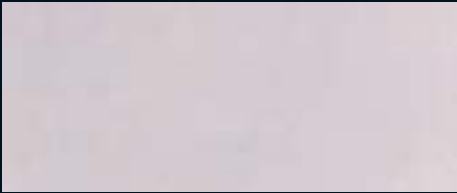
SP P80 B4521



SP P80 N5136



SP P80 N5144



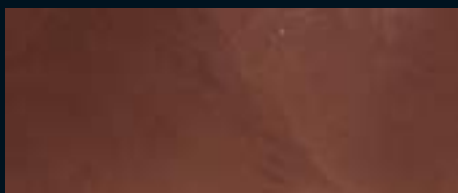
SP P80 N0228

Colours and patterns illustrated are for guidance only. Due to print limitations, the exact pattern, colours and shades may vary from those shown. Please request a sample for accurate colour representation.

Spatulata Colour Palette



SP P80 R4481



SP P80 N5292



SP P80 R4465



SP P80 R3194



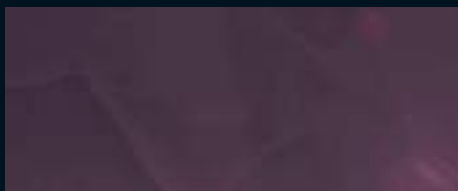
SP P80 R4473



SP P80 R4512



SP P80 R4481



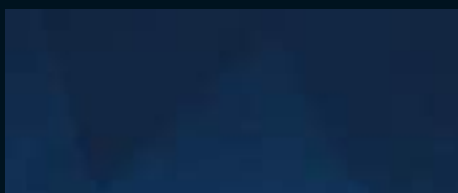
SP P80 B4612



SP P80 R0513



SP P80 R4499



SP P80 B4620



SP P80 B0875



SP P80 B0800



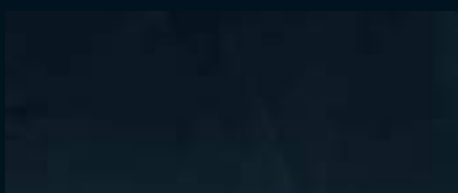
SP P80 G2264



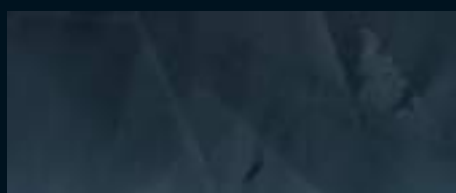
SP P80 G0391



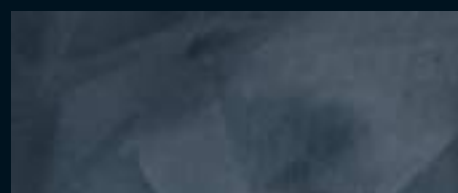
SP P80 G0425



SP P80 N0608



SP P80 N5573



SP P80 N0061

Colours and patterns illustrated are for guidance only. Due to print limitations, the exact pattern, colours and shades may vary from those shown. Please request a sample for accurate colour representation.



ARMOURCOAT™
SURFACE FINISHES

For product specific brochures, further information, and the location of your nearest Armourcoat Surfaces Finishes agent, please see our website.

Armourcoat Limited, Morewood Close, Sevenoaks, Kent TN13 2HU, United Kingdom
Telephone: +44 (0)1732 460668 Fax: +44 (0)1732 450930 Email: sales@armourcoat.co.uk

www.armourcoat.com



ARMOURCOAT™
SURFACE FINISHES

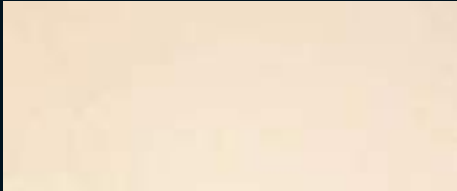
Armuralia

Armuralia provides an exquisite, silky smooth finish with subtle tonal variations. This finish has an inherent elegance, achieving unrivalled depth and vibrancy of colours.

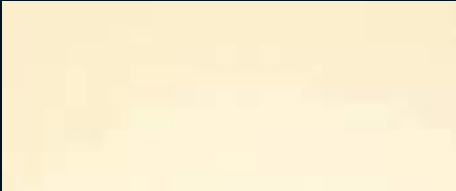
The final appearance of this finish is very dependent on the hand of the individual applicator, making it possible to achieve anything from a plain, lightly polished surface to a more highly burred and marbled effect.



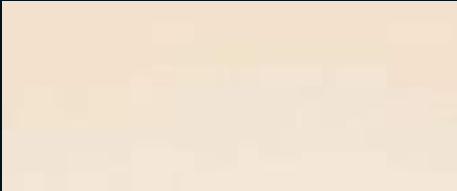
Armuralia Colour Palette



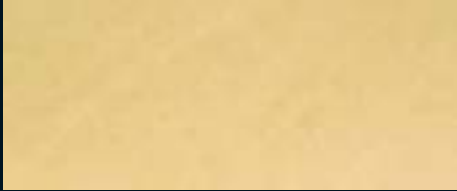
AM P50 Y2395



AM P50 Y0860



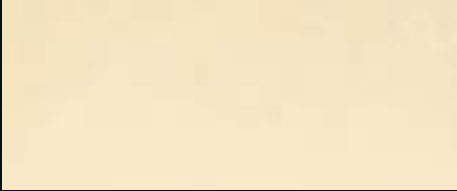
AM P50



AM P50 Y2403



AM P50 Y0316



AM P50 N0509



AM P50 Y0555



AM P50 Y0522



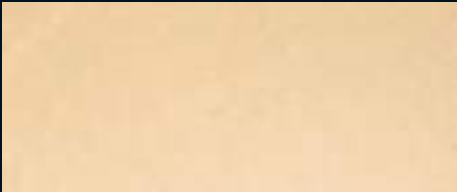
AM P50 Y0548



AM P50 Y0613



AM P50 Y2411



AM P50 Y2429



AM P50 N5151



AM P50 N5169



AM P50 N5177



AM P50 R3814



AM P50 R0398



AM P50 R4358



AM P50 R4366



AM P50 R4374



AM P50 R4382



AM P50 R4390



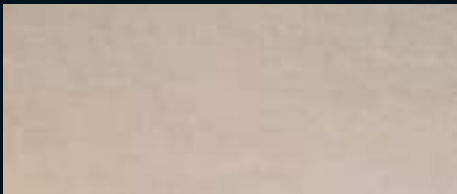
AM P50 R4408



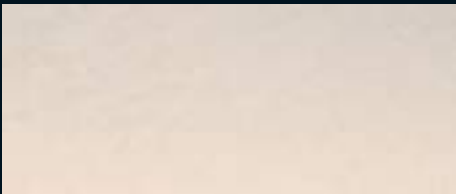
AM P50 R4416

Colours and patterns illustrated are for guidance only. Due to print limitations, the exact pattern, colours and shades may vary from those shown. Please request a sample for accurate colour representation.

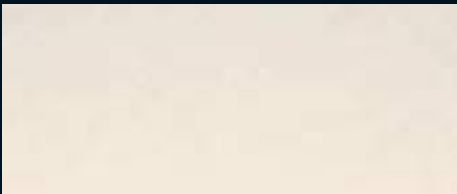
Armuralia Colour Palette



AM P50 N0756



AM P50 N0244



AM P50 N0491



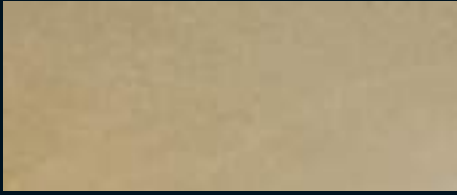
AM P50 N0145



AM P50 N5110



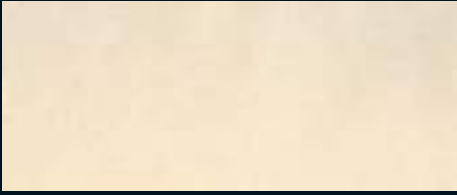
AM P50 N5128



AM P50 G2132



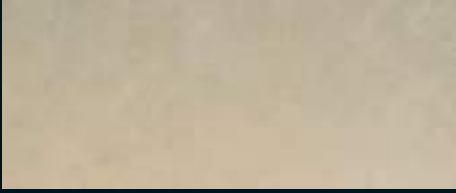
AM P50 G0045



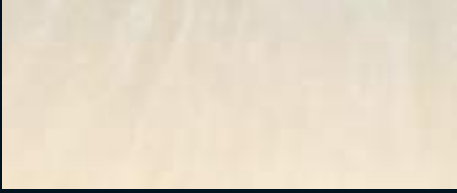
AM P50 G2140



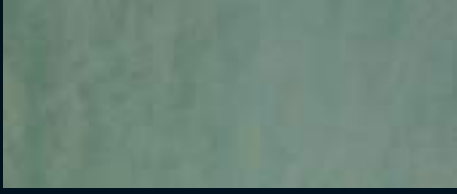
AM P50 G2157



AM P50 G2165



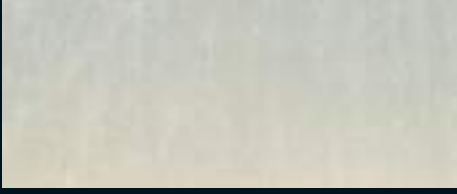
AM P50 G2173



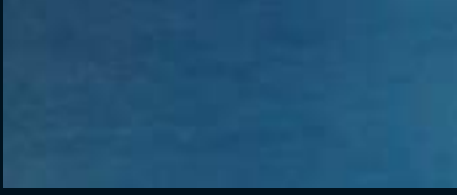
AM P50 G2181



AM P50 G0102



AM P50 G0136



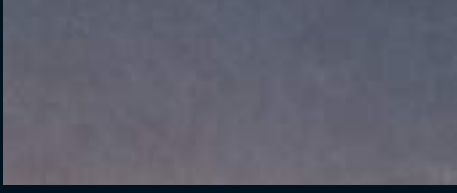
AM P50 B4471



AM P50 B4489



AM P50 B4497



AM P50 B4505



AM P50 B4513



AM P50 B4521



AM P50 N5136



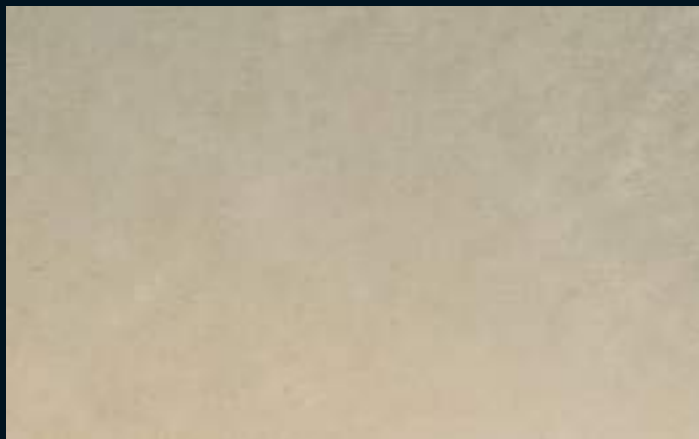
AM P50 N5144



AM P50 N0228

Colours and patterns illustrated are for guidance only. Due to print limitations, the exact pattern, colours and shades may vary from those shown. Please request a sample for accurate colour representation.

Armuralia Colour Palette



AM P50 G2165



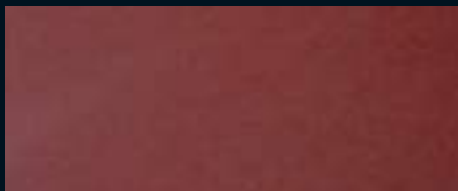
AM P50 N5292



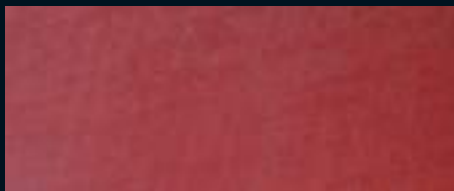
AM P50 R4465



AM P50 R3194



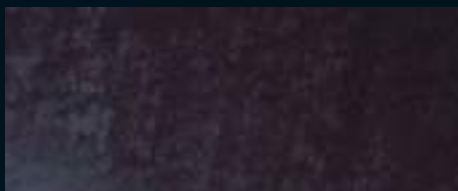
AM P50 R4473



AM P50 R4512



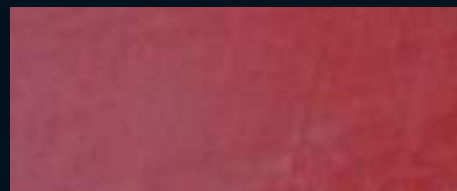
AM P50 R4481



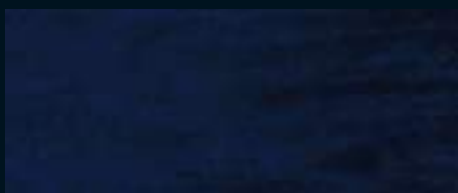
AM P50 B4612



AM P50 R0513



AM P50 R4499



AM P50 B4620



AM P50 B0875



AM P50 B0800



AM P50 G2264



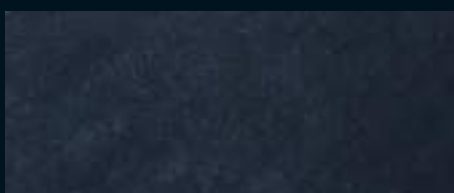
AM P50 G0391



AM P50 G0425



AM P50 N0608



AM P50 N5573



AM P50 N0061

Colours and patterns illustrated are for guidance only. Due to print limitations, the exact pattern, colours and shades may vary from those shown. Please request a sample for accurate colour representation.



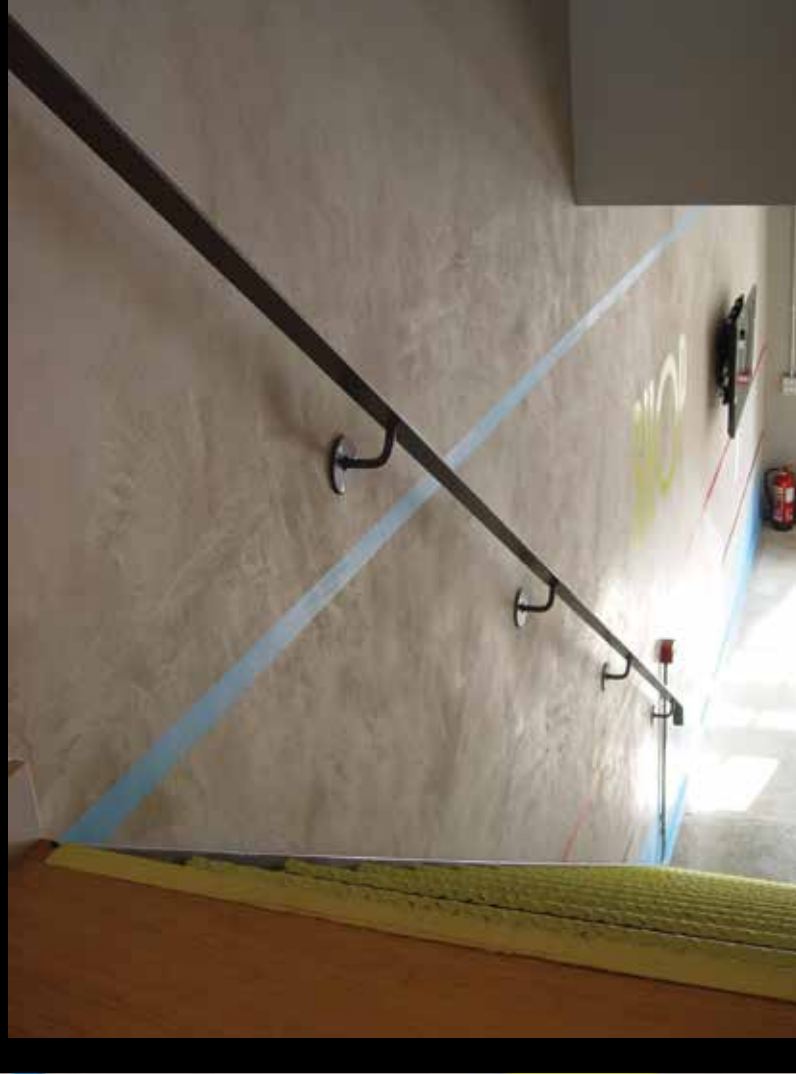
For product specific brochures, further information, and the location of your nearest Armourcoat Surfaces Finishes agent, please see our website.

Armourcoat Limited, Morewood Close, Sevenoaks, Kent TN13 2HU, United Kingdom
Telephone: +44 (0)1732 460668 Fax: +44 (0)1732 450930 Email: sales@armourcoat.co.uk

www.armourcoat.com

Named after the characteristic building stone of Venice, Istria is made from a combination of slaked lime, recycled marble powder and special additives. Available in contemporary range of 72 colours, the Istria finish is full of ingrained surface movement and creates a matt or honed stone appearance.

Tonal variation and surface movement within the finish complements other natural materials including wood, stone and fabric.



POLISHED PLASTER

Istria

ISTRIA



For further information and the location of your nearest Armourcoat Surface Finishes agent, please visit our website.

Armourcoat Limited, Morewood Close, Sevenoaks, Kent, TN13 2HU, United Kingdom
Telephone: +44 (0)1732 460668 Fax: +44 (0)1732 450930 Email: specsales@armourcoat.co.uk

Armourcoat Surface Finishes Inc, 4330 Production Court, Las Vegas, NV 89115 USA
Telephone: (702) 644-0601 Fax: (702) 644-0554 Email: sales@usa.armourcoat.com

www.armourcoat.com

©2014 Armourcoat Limited. Istria is a product and trademark of Armourcoat Ltd.

ISB0614

Istria Colour Palette

		
IST 7968	IST 7969	IST 7970
		
IST 7971	IST 7972	IST 7973
		
IST 7974	IST 7975	IST 7976
		
IST 7977	IST 7978	IST 7979
		
IST 7980	IST 7981	IST 7982
		
IST 7983	IST 7984	IST 7985
		
IST 7986	IST 7987	IST 7988
		
IST 7989	IST 7990	IST 7991

Colours and patterns illustrated are for guidance only. Due to print limitations, the exact pattern, colours and shades may vary from those shown. Please request a sample for accurate colour representation.

Istria Colour Palette

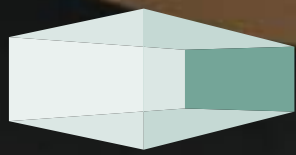
		
IST 7992	IST 7993	IST 7994
		
IST 7995	IST 7996	IST 7997
		
IST 7998	IST 7999	IST 8000
		
IST 8001	IST 8002	IST 8003
		
IST 8004	IST 8005	IST 8006
		
IST 8007	IST 8008	IST 8009
		
IST 8010	IST 8011	IST 8012
		
IST 8013	IST 8014	IST 8015

Colours and patterns illustrated are for guidance only. Due to print limitations, the exact pattern, colours and shades may vary from those shown. Please request a sample for accurate colour representation.

Istria Colour Palette

		
IST 8016	IST 8017	IST 8018
		
IST 8019	IST 8020	IST 8021
		
IST 8022	IST 8023	IST 8024
		
IST 8025	IST 8026	IST 8027
		
IST 8028	IST 8029	IST 8030
		
IST 8031	IST 8032	IST 8033
		
IST 8034	IST 8035	IST 8036
		
IST 8037	IST 8038	IST 8039

Colours and patterns illustrated are for guidance only. Due to print limitations, the exact pattern, colours and shades may vary from those shown. Please request a sample for accurate colour representation.



ARMOURCOAT®
SURFACE FINISHES

POLISHED PLASTER

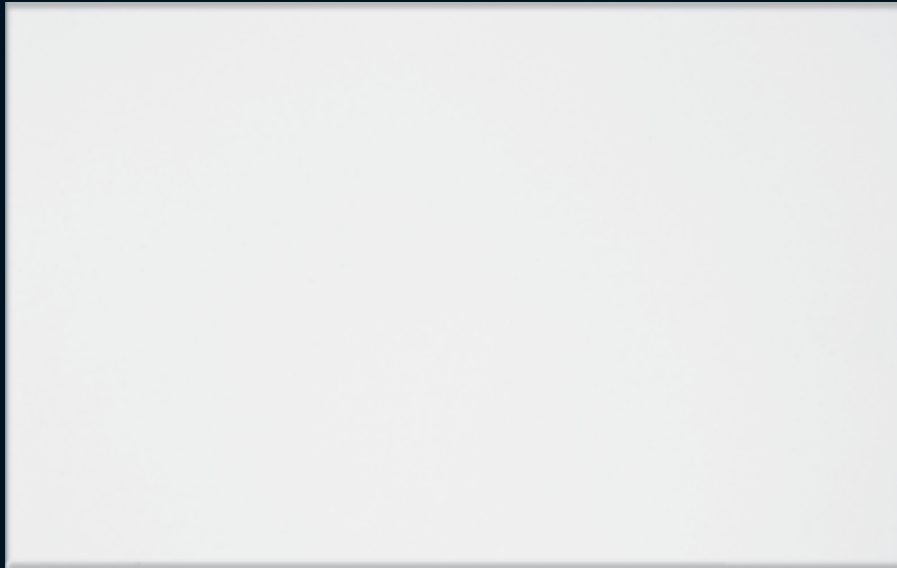
SMG

SMG is a super luxury finish with the appearance of a seamless high-gloss 'lacquer' effect, with virtually no surface movement visible.

The finish works best in black or white as a stunning backdrop for haute couture. SMG provides an opulent decorative effect, equally suited for walls and ceilings, offering great light reflection to create an inviting and spacious interior.

- A natural mineral product created from ultra-fine lime putty, marble powder and special additives.
- Contains 40% pre-consumer recycled marble
- Low VOCs
- Class '0' / 'A' fire-rating

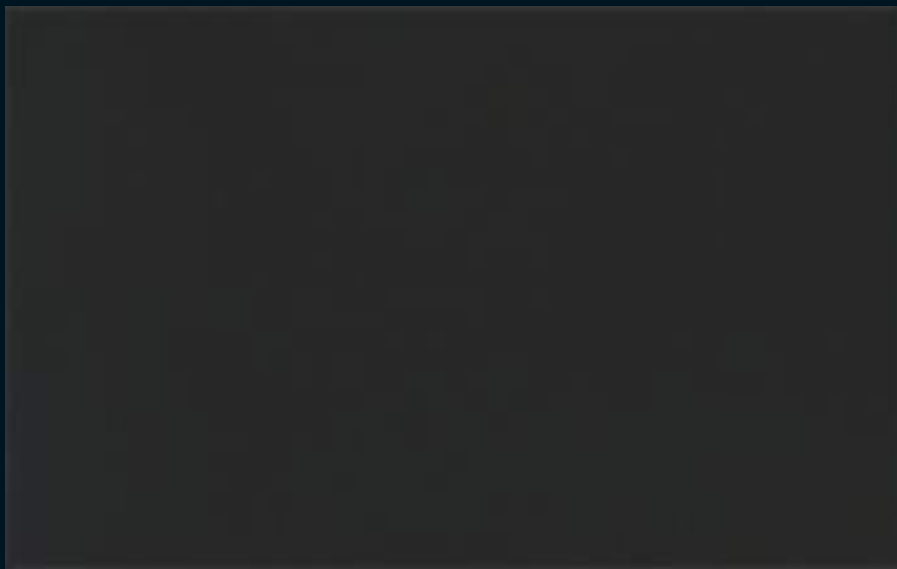




SMG 6653



SMG 7269



SMG 6654

Armourcoat Surface Finishes Morewood Close London Road Sevenoaks Kent TN13 2HU
T: +44 (0)1732 460668 F: +44 (0)1732 450930 E: specsales@armourcoat.co.uk

www.armourcoat.com

SMG 0513